



## CENTERLOCK ROAD Hubs



### HANDBUILDING

- The front hubshell is designed for radial lacing pattern.
- The rear hubshell is designed for 2 cross and 3 cross lacing patterns. 1 cross and radial lacing patterns are forbidden on the drive side.
- The front hubshell maximum spoke tension is 1000N.
- The rear hubshell maximum spoke tension is 1200N.
- To calculate your spoke lengths, refer to geometry drawings (page 3).

### RECOMMENDED TORQUES

- Cassette : 40 Nm
- Play adjustment bolt : 1 Nm
- Centerlock ring : 40 Nm

### CLEANING

- High pressure cleaning on the hubs is forbidden.
- Detergents on the hubs are forbidden.

## FRONT HUB SERVICE (see front hub exploded view on page 4)

- To open your front hub, just pull an endcap off.
- Then, you can pull the axle and the last endcap off together through the bearings.
- It leaves you with the hubshell and its bearings.
- If necessary, you can change the bearings.
- After cleaning, you can just rebuild your hub in the reverse way you disassembled it.
- If you put new bearings, we strongly recommend to adjust the bearings play as explained in the « play adjustment » section below.

## REAR HUB SERVICE (see rear hub exploded view on page 5)

- To open your rear hub, just pull an endcap off.
- Then, you can pull the axle and the last endcap off together through the bearings.
- Next, you can pull the freehub and its bearings off the hubshell.
- You can see the bearings spacer, the ratchet and his wave spring that you can also pull off.
- It leaves you with the hubshell and its bearings.
- If necessary, you can change hubshell and freehub bearings.
- After cleaning, you can just rebuild your hub in the reverse way you disassembled it. Don't forget to lubricate the hub/ratchet and the ratchet/freehub interfaces with the Dumonde Pro X Freehub grease, available on our webshop.
- If you put new bearings, we strongly recommend to adjust the bearings play as explained in the « play adjustment » section below.

## PLAY ADJUSTMENT

- To adjust the play of your hubs, you need to put your wheel on your bike and tighten it.
- Then, you have to loosen the torx bolt with the torx screwdriver provided with your hubs.
- Next, you need to tighten or loosen the play adjustment piece on the threaded endcap until it comes just against the bearing next to it. If you tighten too much, you will stress the bearings and decrease their lifetime. If you loosen too much, you will have play in your wheels.
- When you have adjusted the play, you can tighten the play adjustment torx bolt back to a 1 Nm torque.

## FRONT CENTERLOCK ROAD Hub Geometry (mm)



Spoke holes diameter = 2.5

## REAR CENTERLOCK ROAD Hub Geometry (mm)



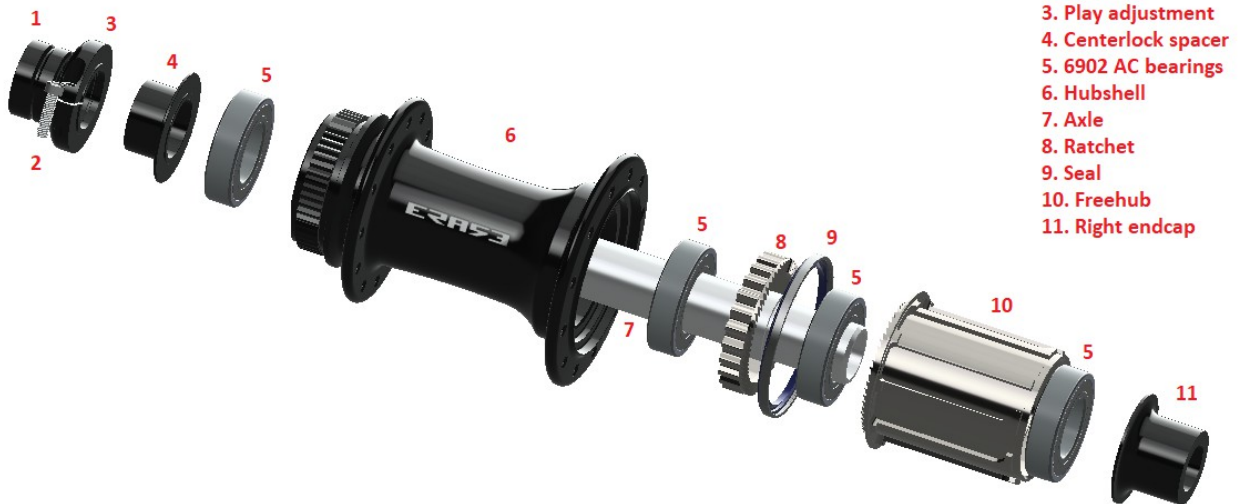
Spoke holes diameter = 2.5

## Centerlock Front Hub



1. Left endcap
2. 6902 AC bearings
3. Hubshell
4. Axle
5. Screw
6. Play adjustment
7. Right endcap

## Centerlock Rear Hub



1. Left endcap
2. Screw
3. Play adjustment
4. Centerlock spacer
5. 6902 AC bearings
6. Hubshell
7. Axle
8. Ratchet
9. Seal
10. Freehub
11. Right endcap